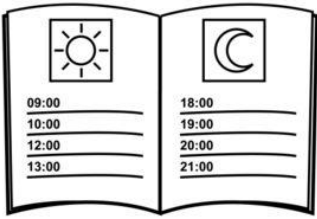


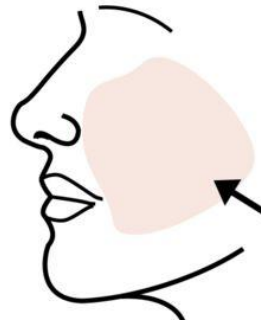
Ř na konci slova



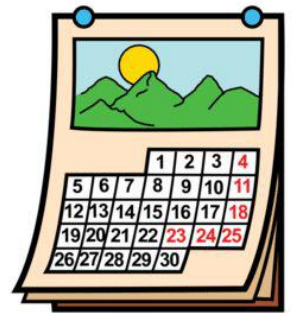
DIÁŘ



DIGESTOŘ



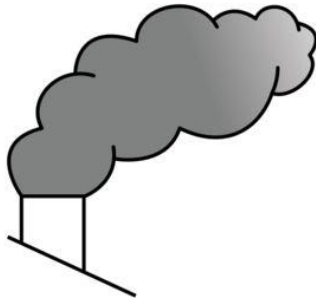
TVÁŘ



KALENDÁŘ



KEŘ



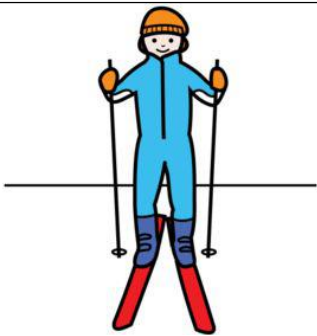
KOUŘ



KOVÁŘ



KUCHAŘ



LYŽAŘ



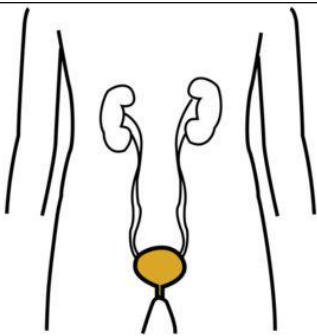
LÉKAŘ



MALÍŘ



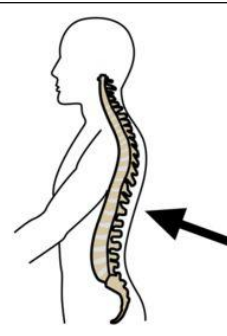
METAŘ



MĚCHÝŘ



PASTÝŘ



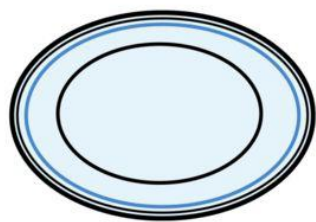
PÁTEŘ



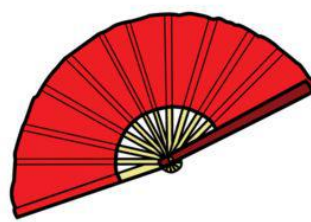
PEKAŘ



POPELÁŘ



TALÍŘ



VĚJÍŘ



ZUBAŘ